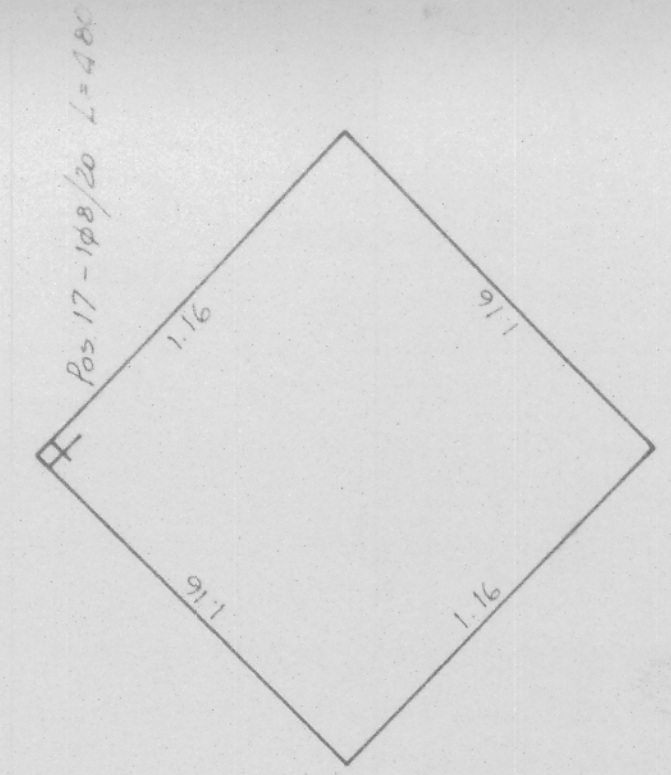
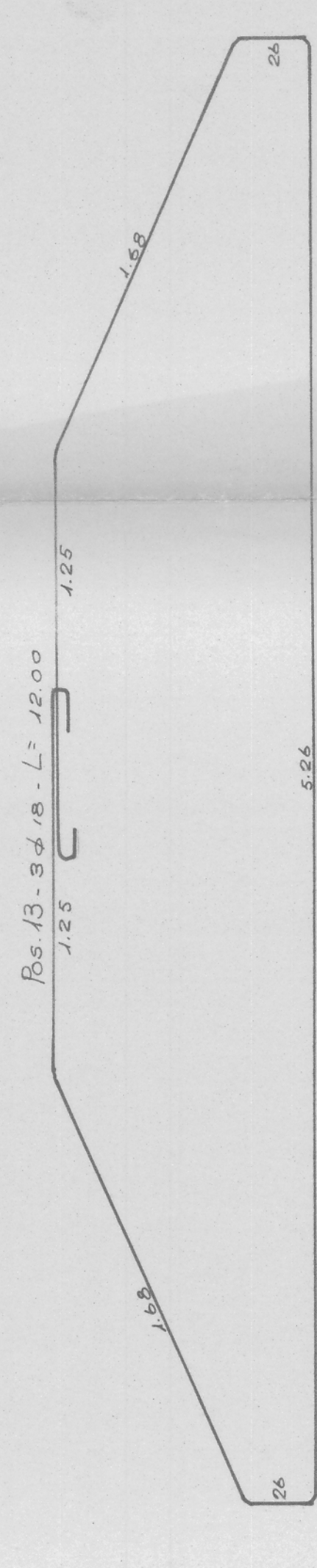
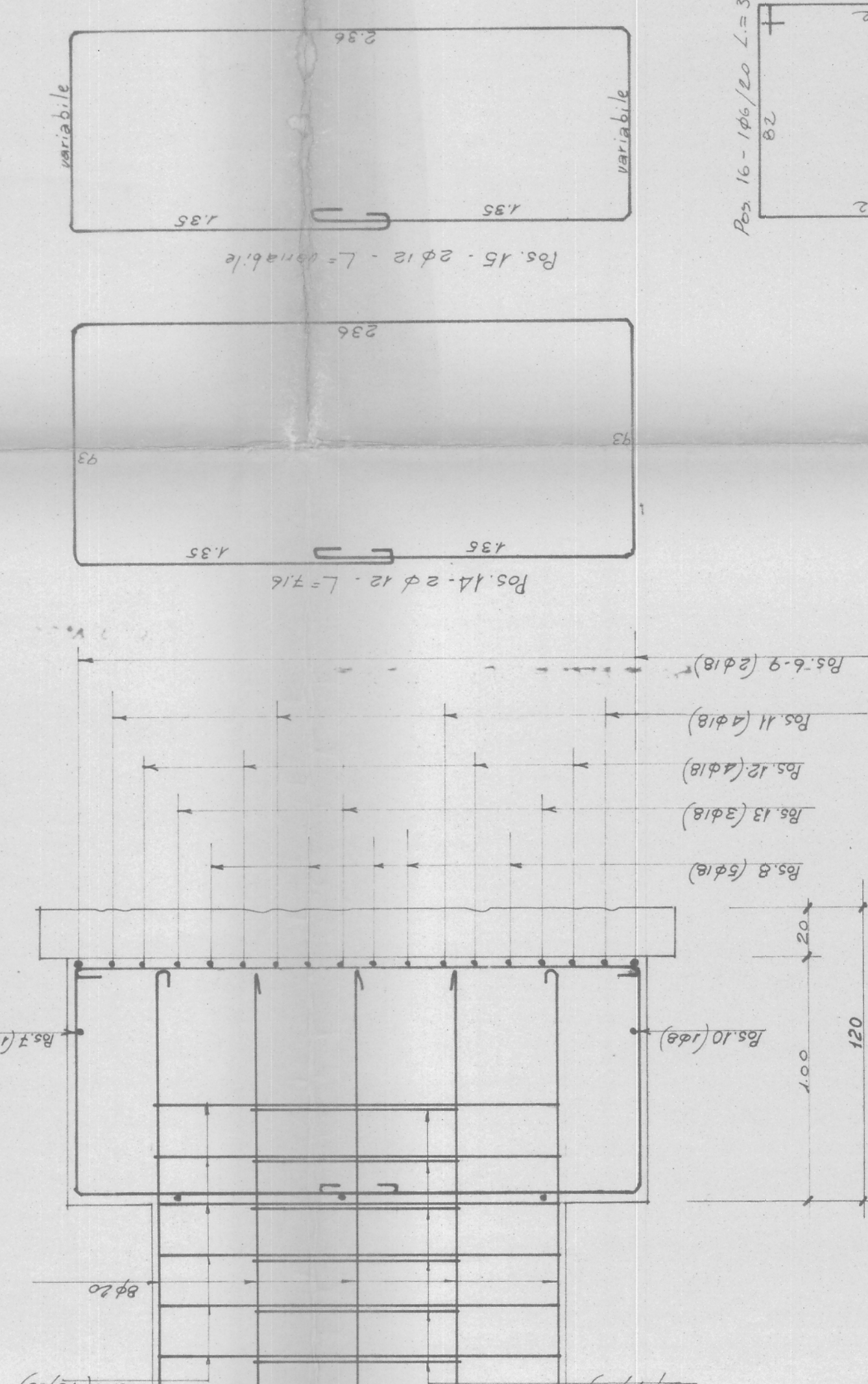
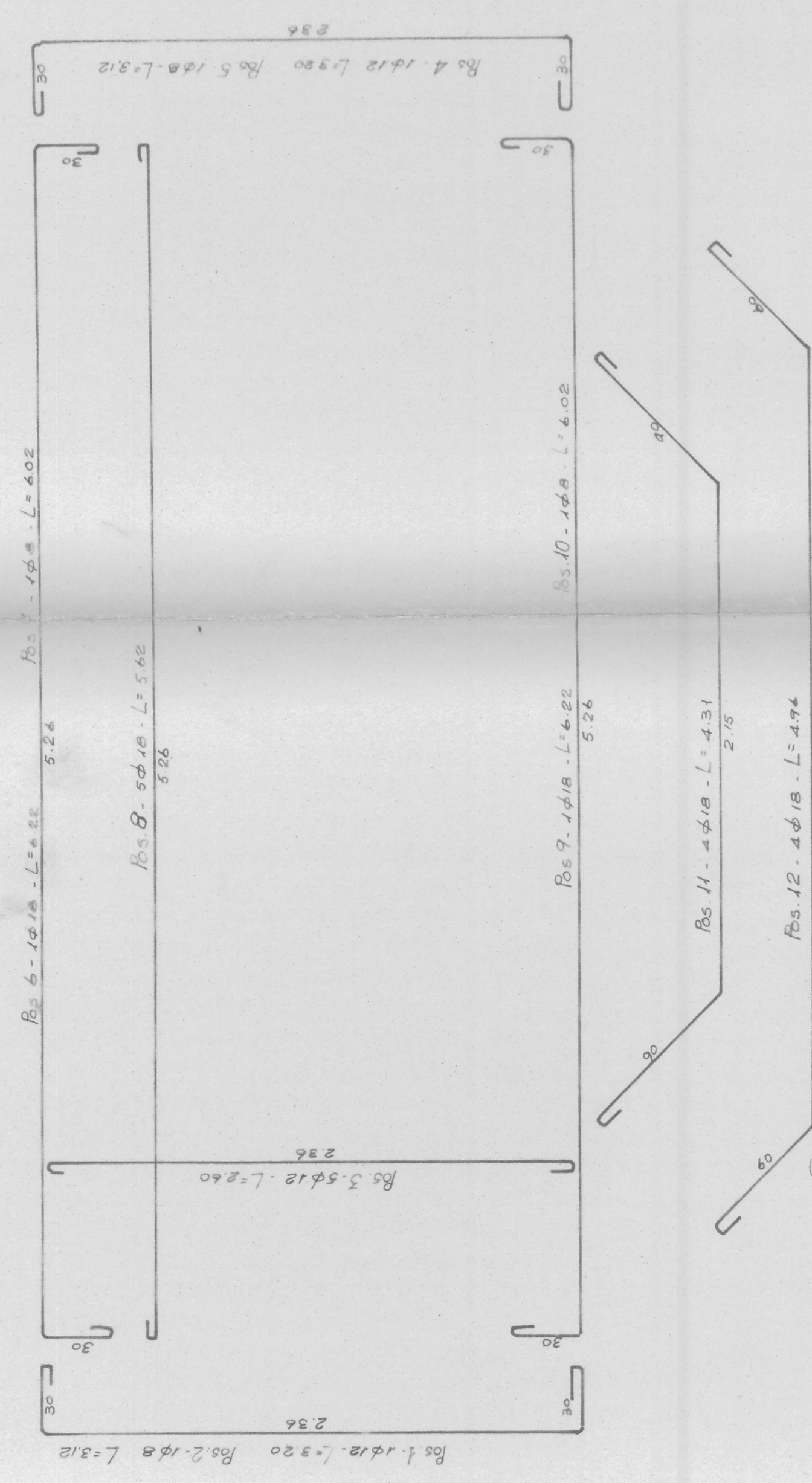
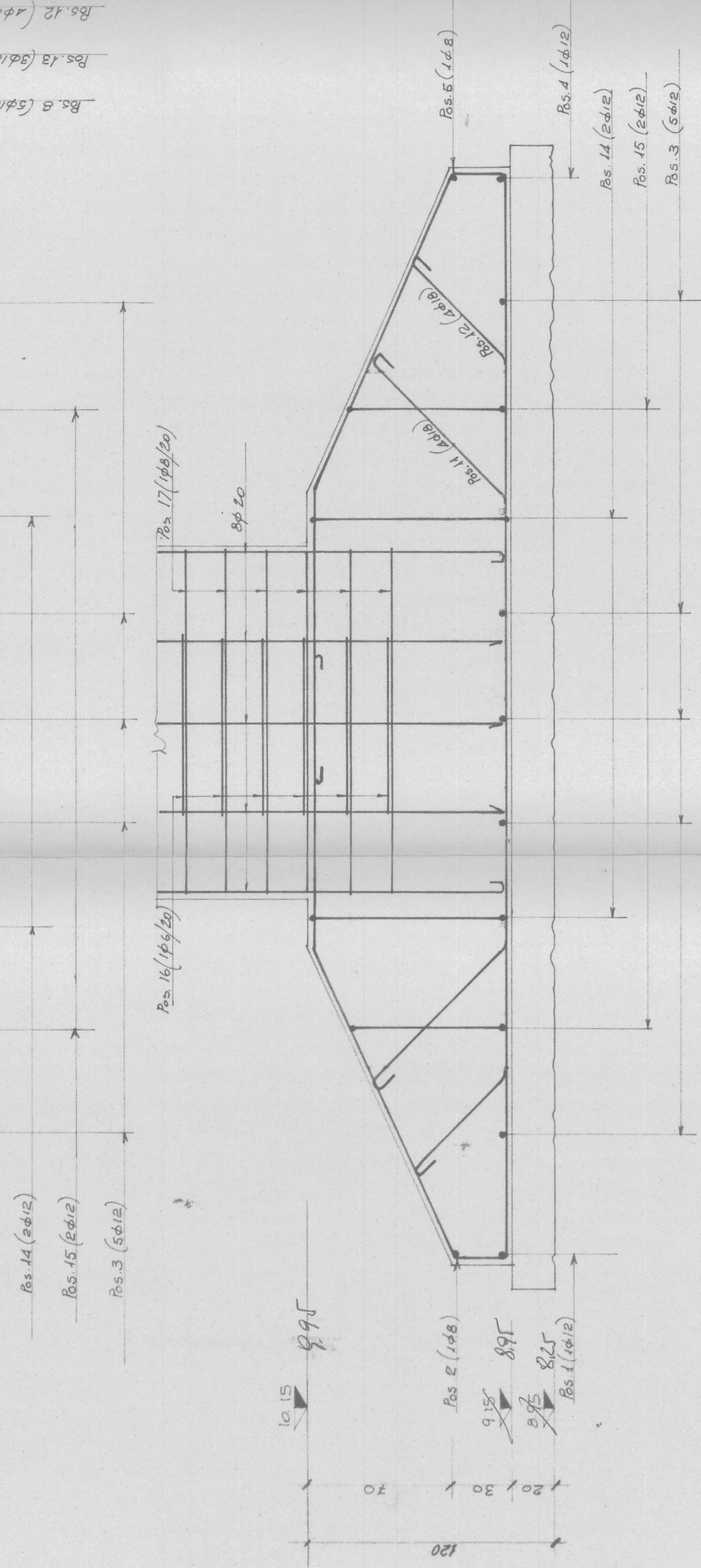
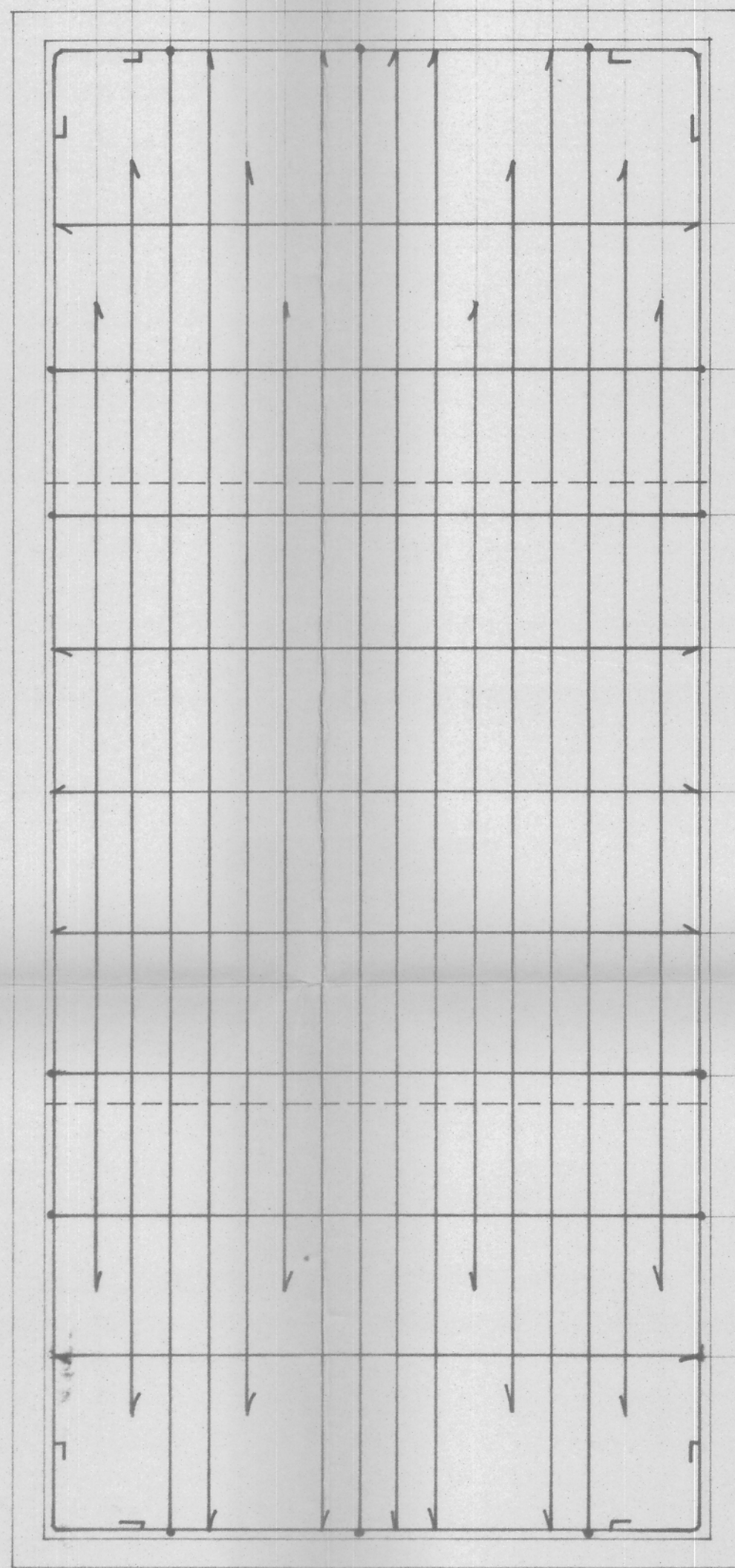
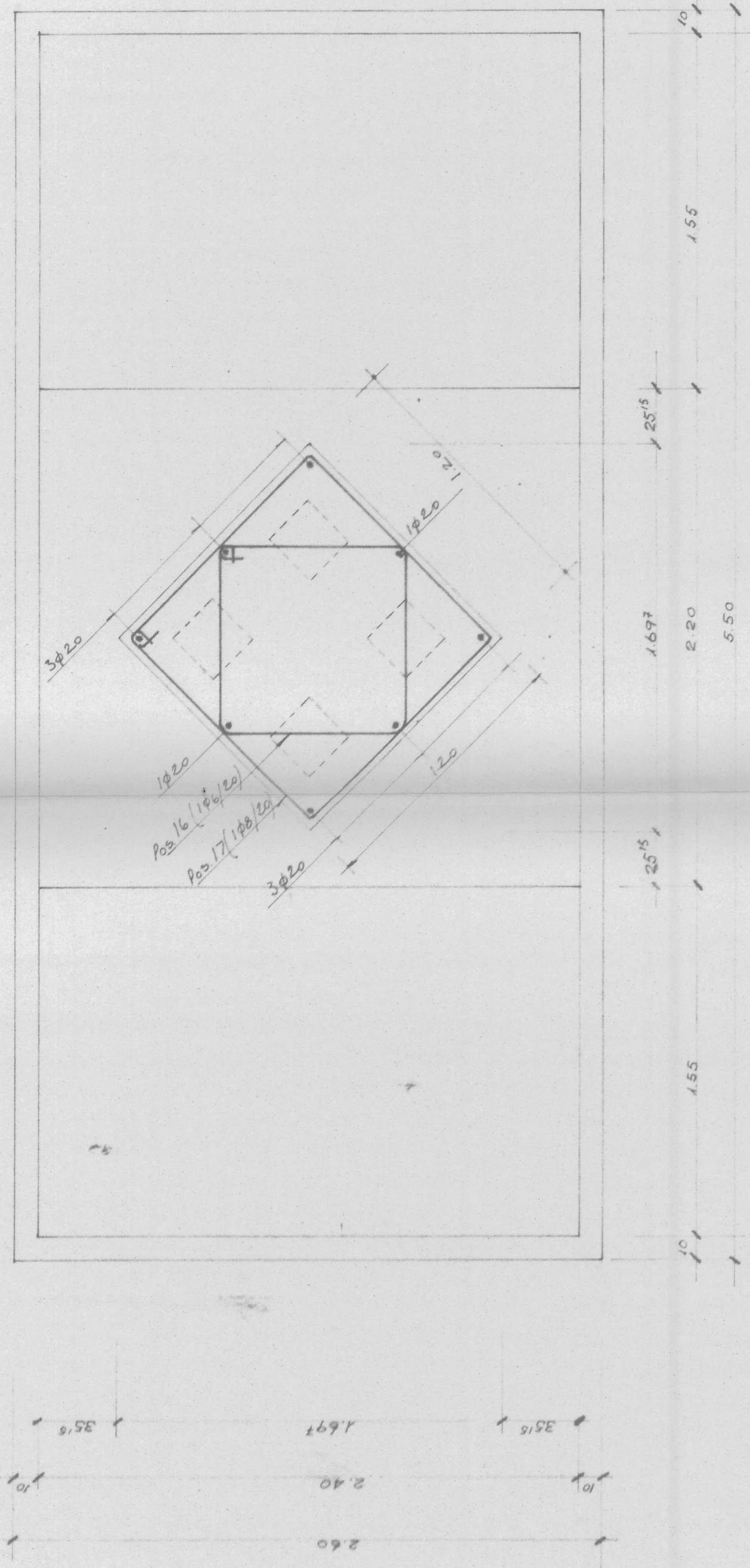


**PART. ARMATURA DADO DA  
QUOTA 10.15 A QUOTA 13.11**

PER PARTICOLARE ANCORAGGIO TERMINALE DEI FERRI VEDI TRAV. N° 219



controllare le misure

NOTA PER L'ANCORAGGIO DEI FERRI PER I PILASTRINI  
SUPERIORI φ14 = 70 cm.