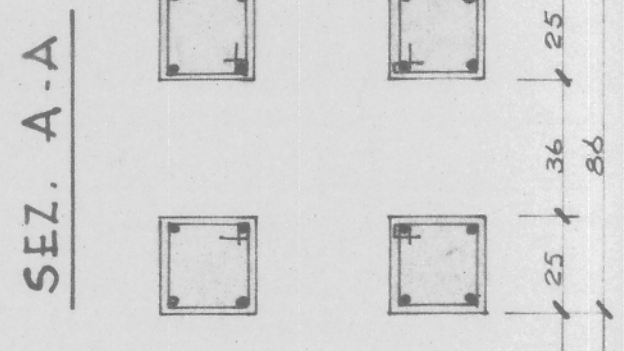
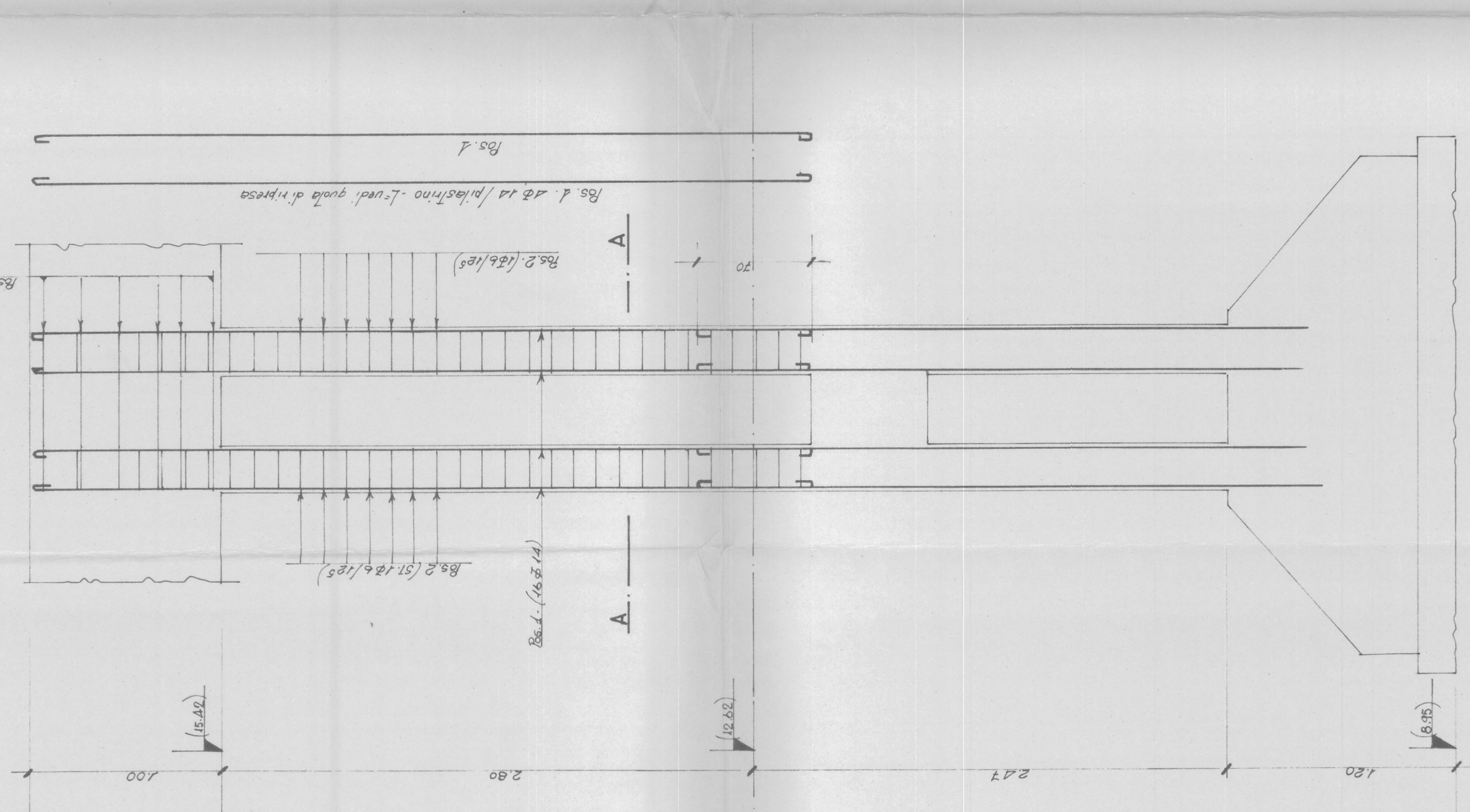
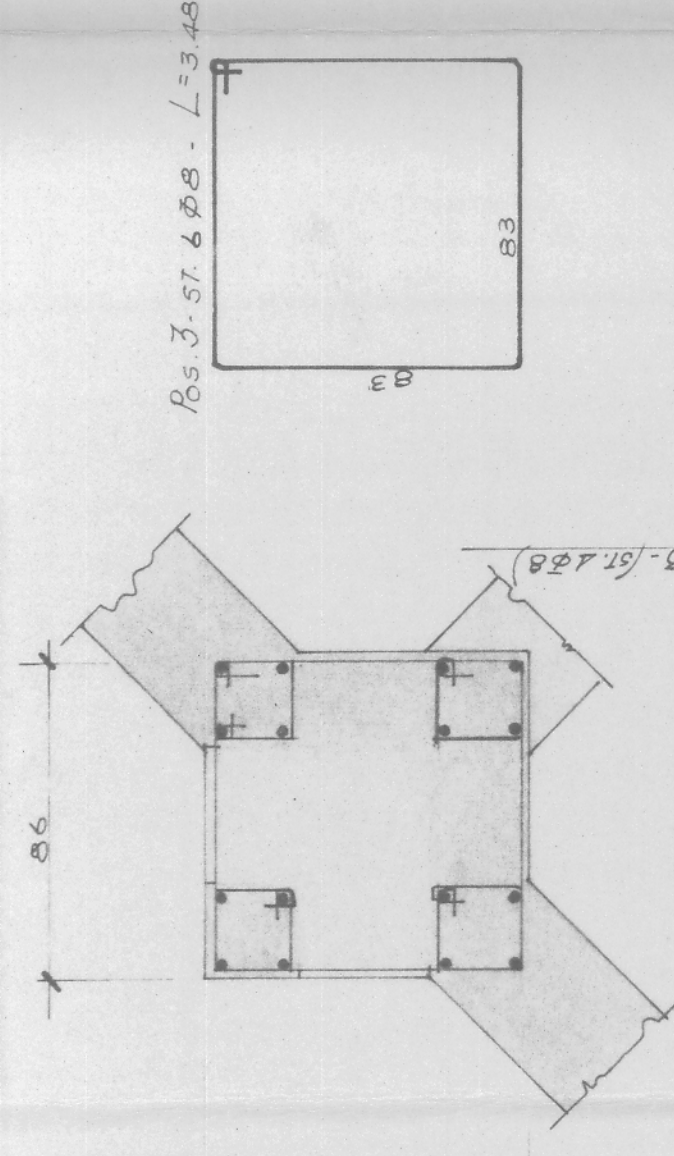
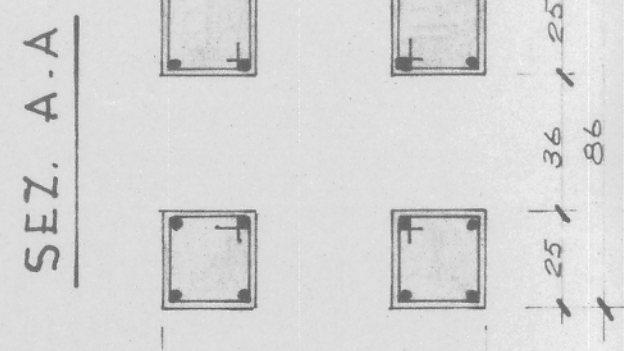
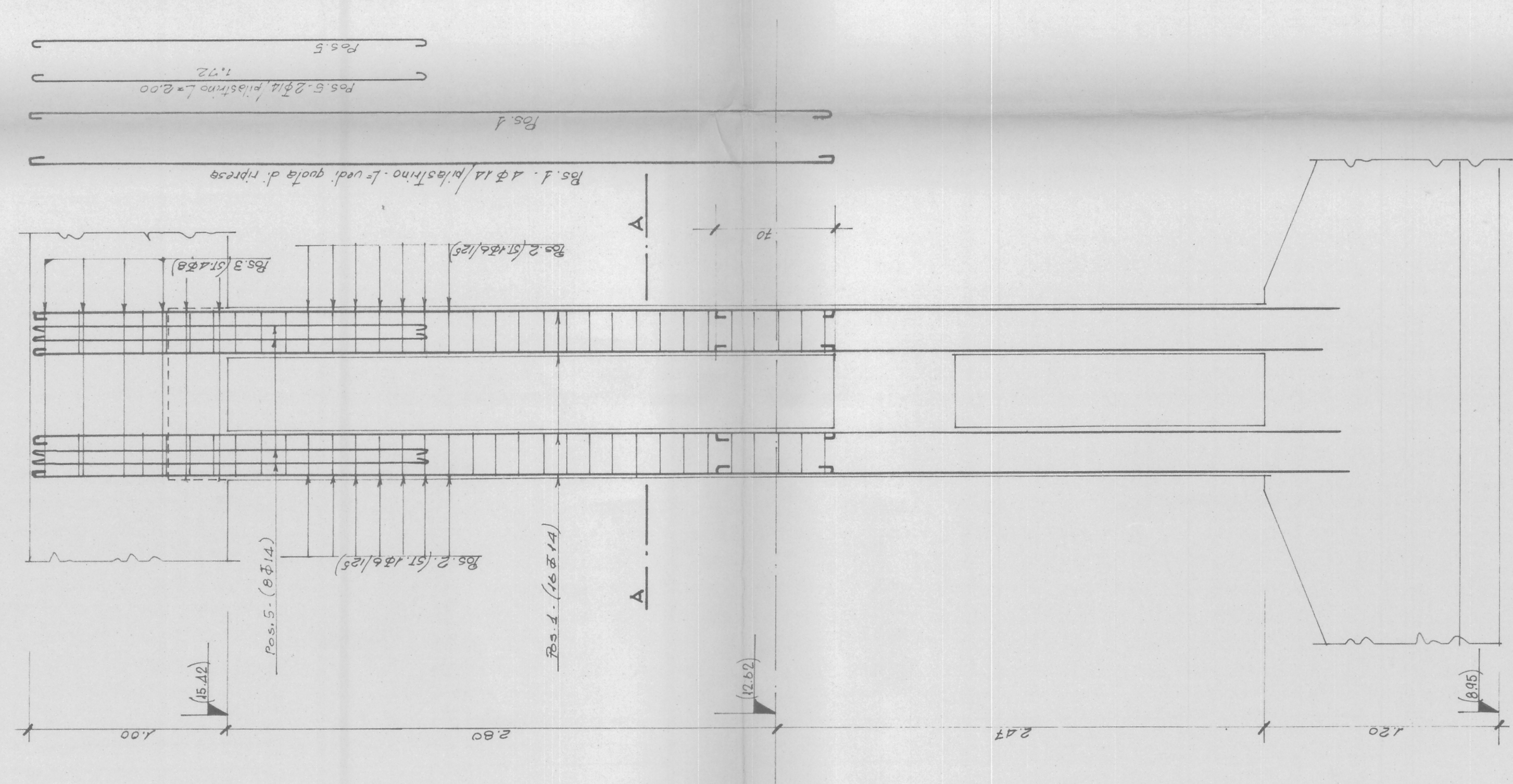
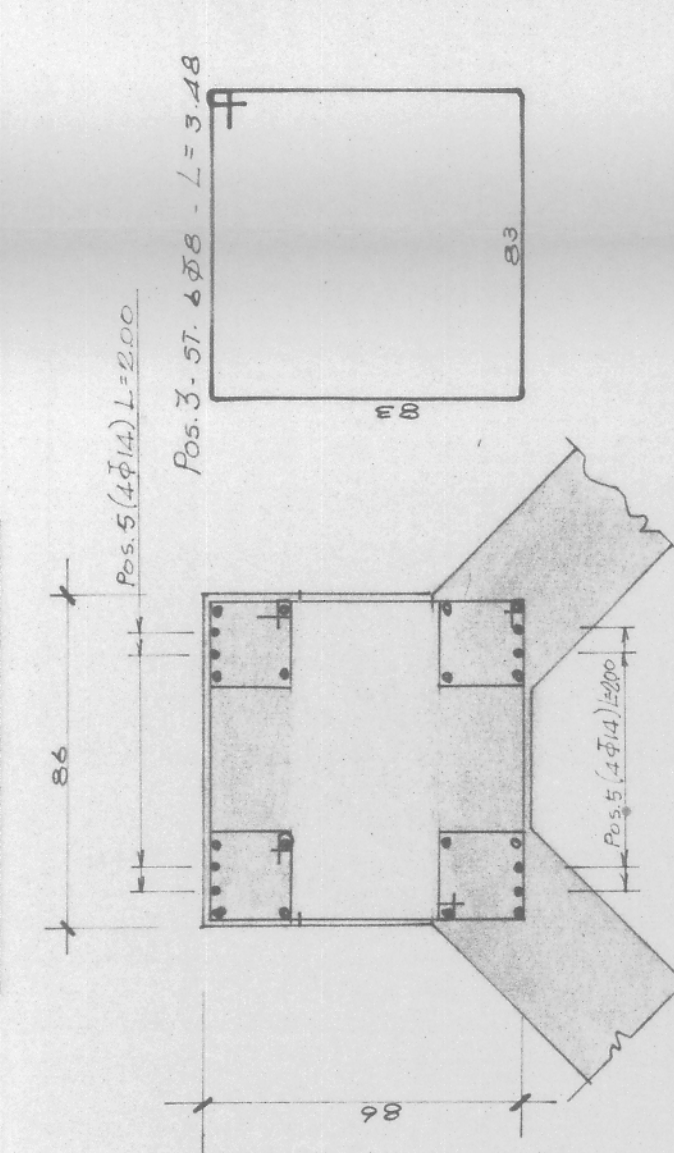


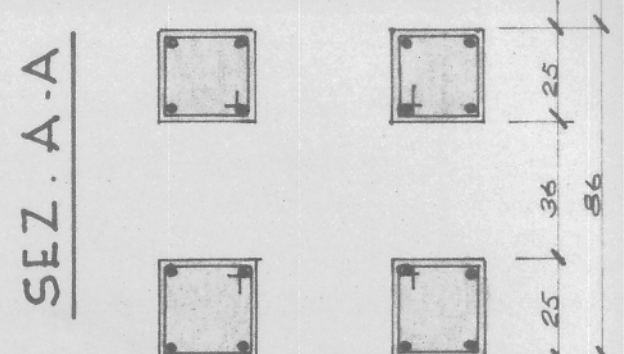
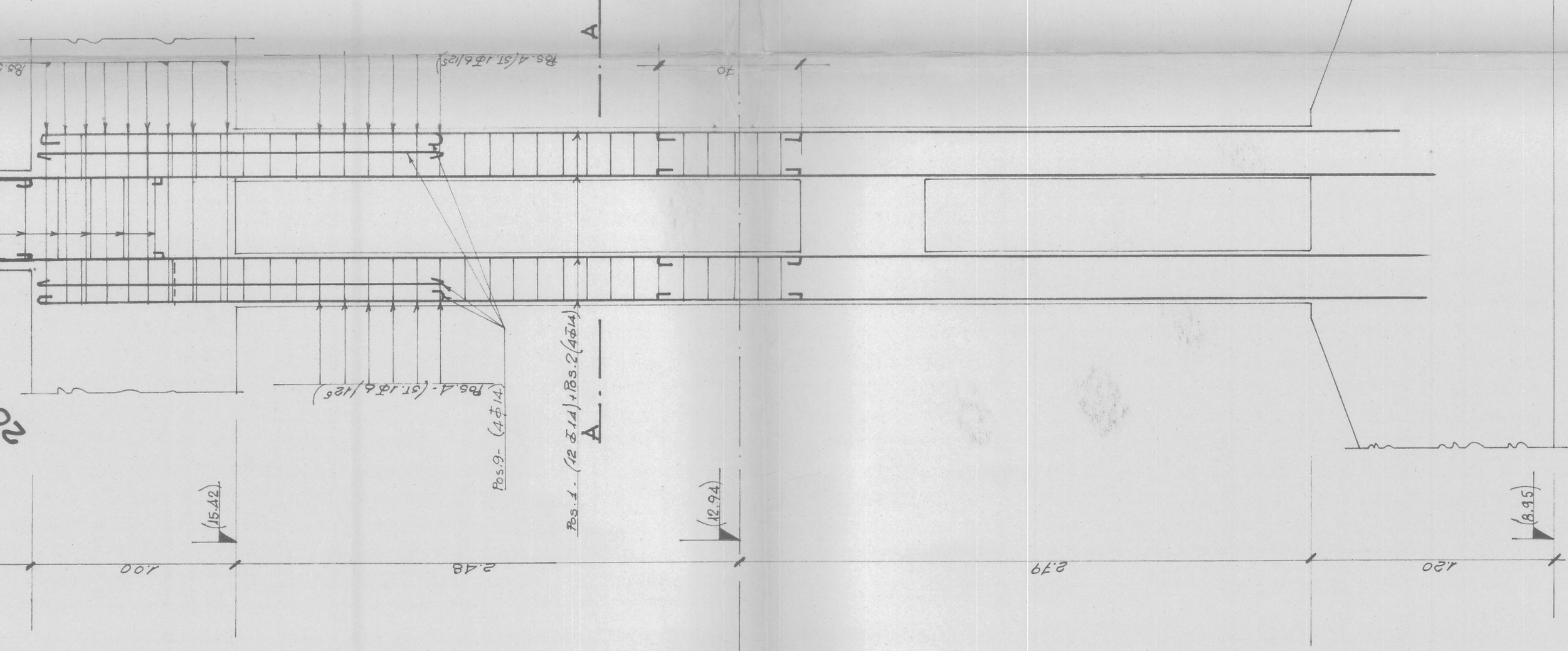
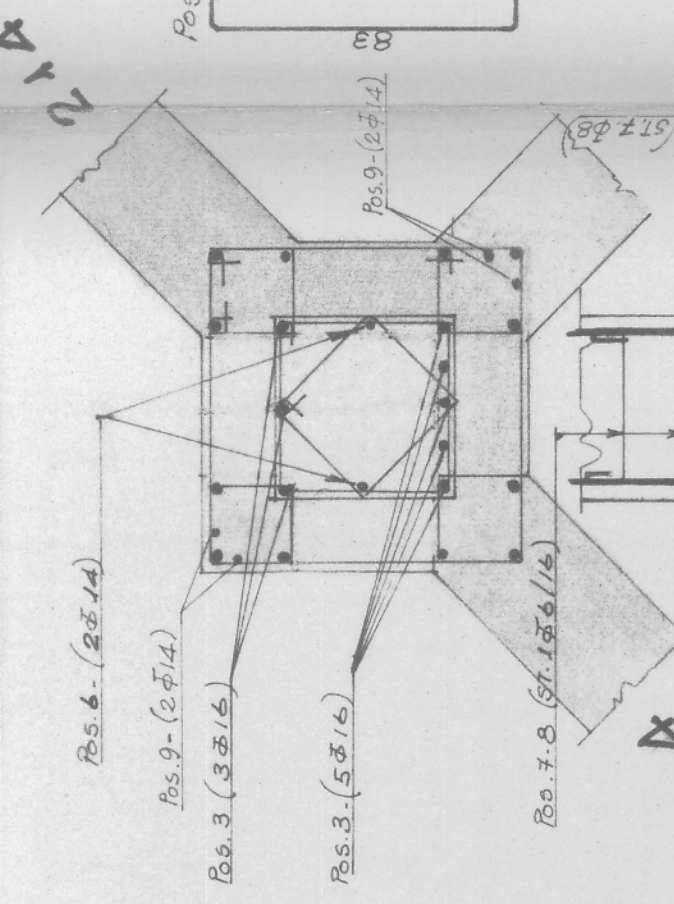
PILASTRI 214-220



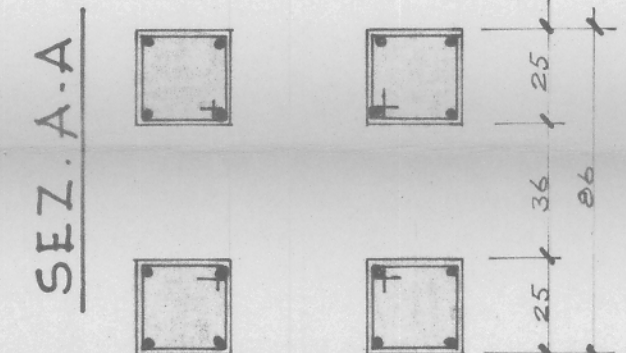
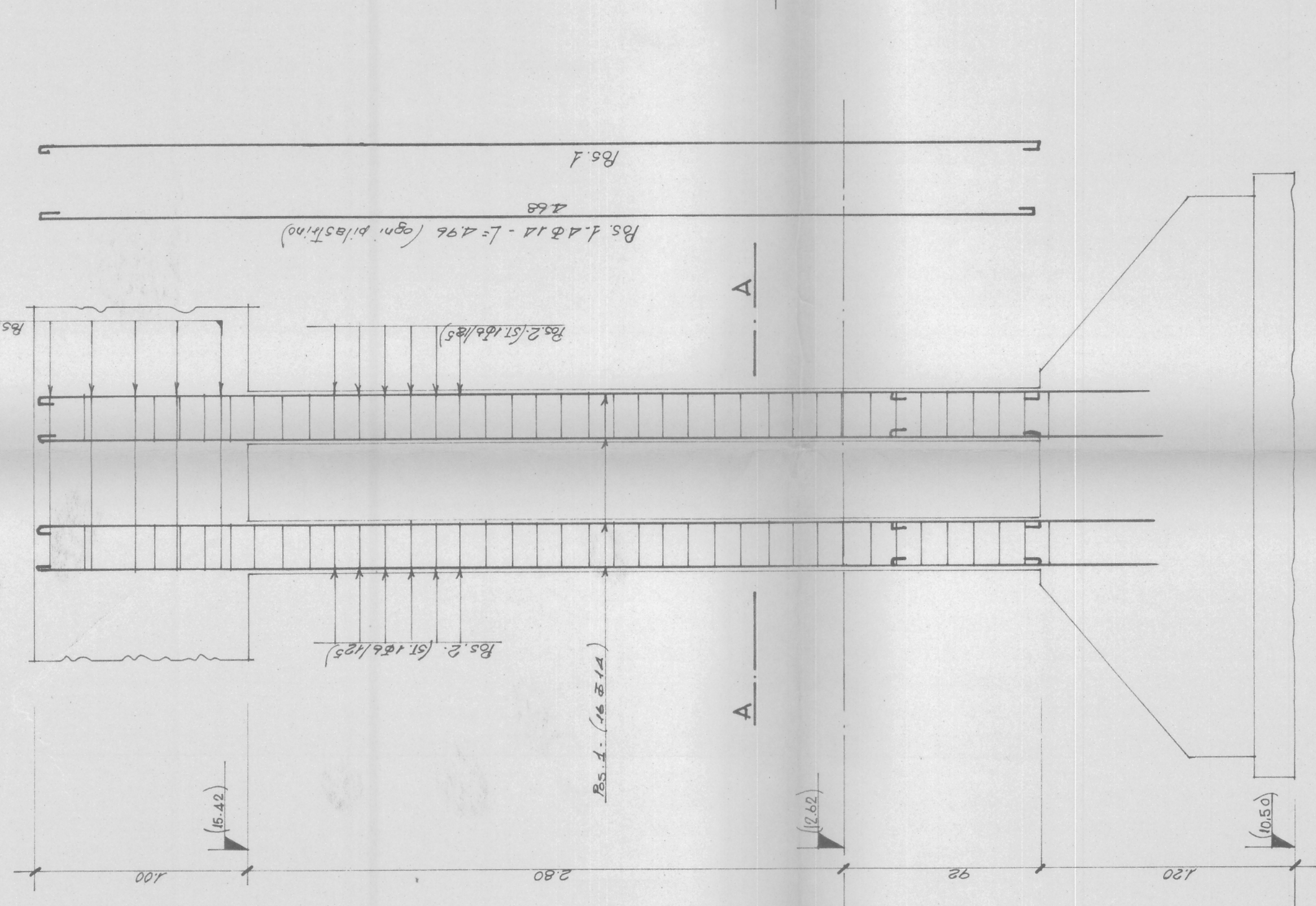
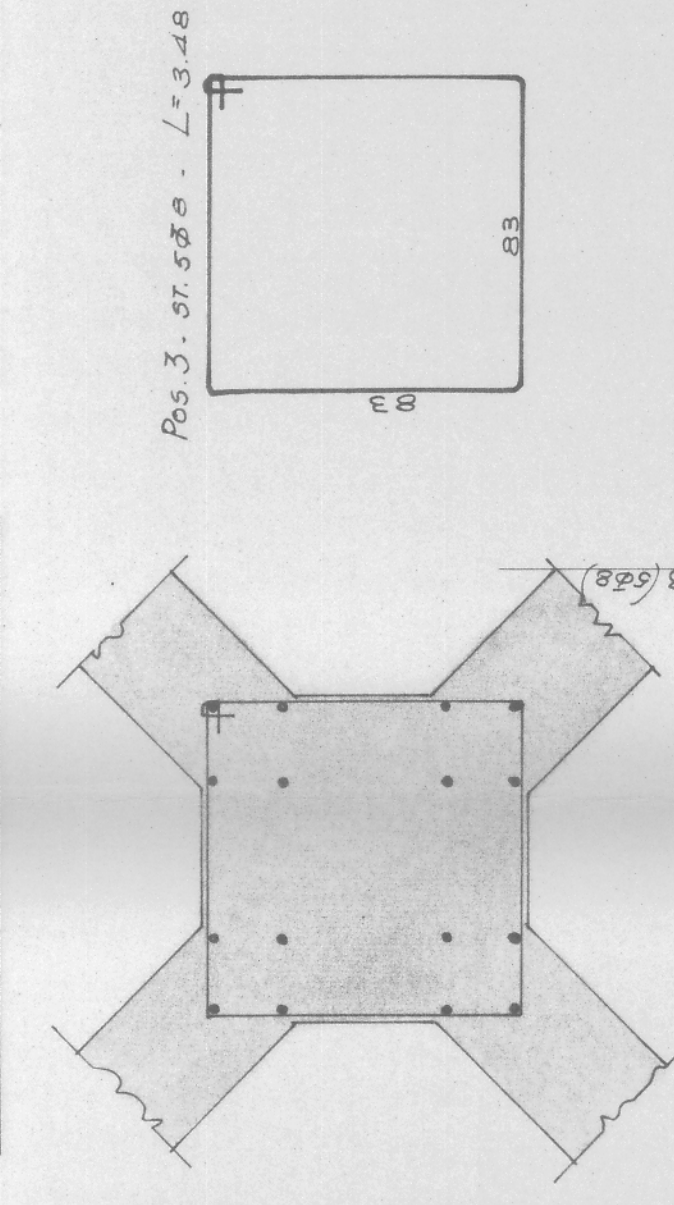
PILASTRO 219



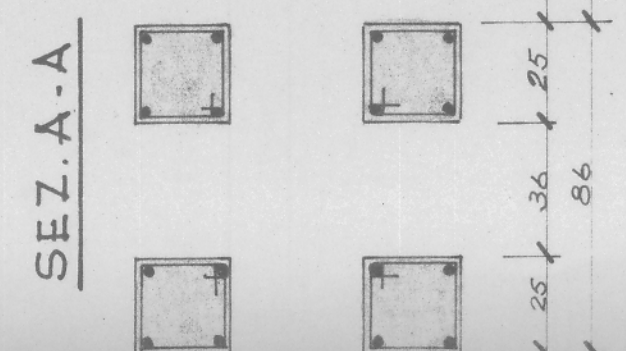
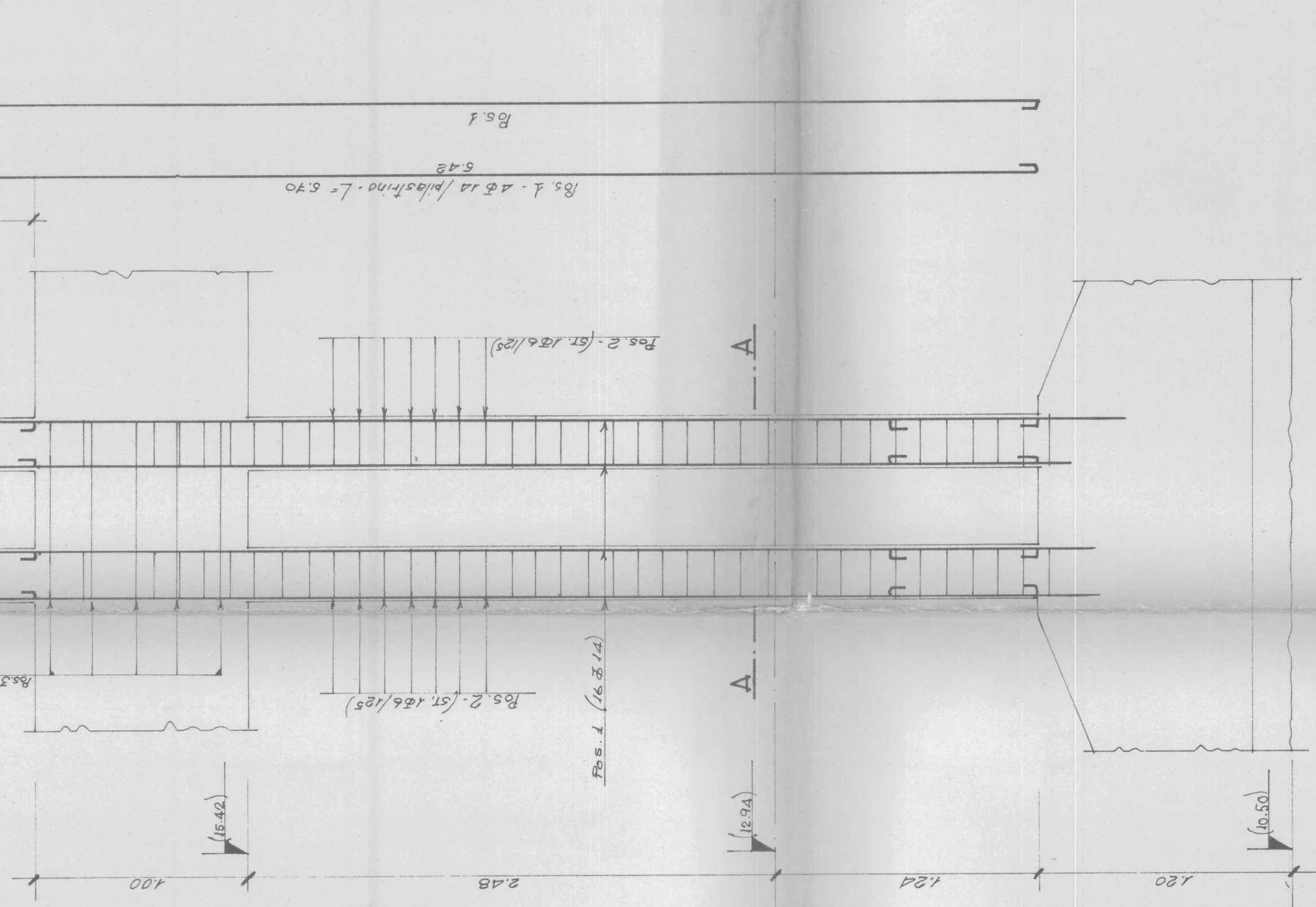
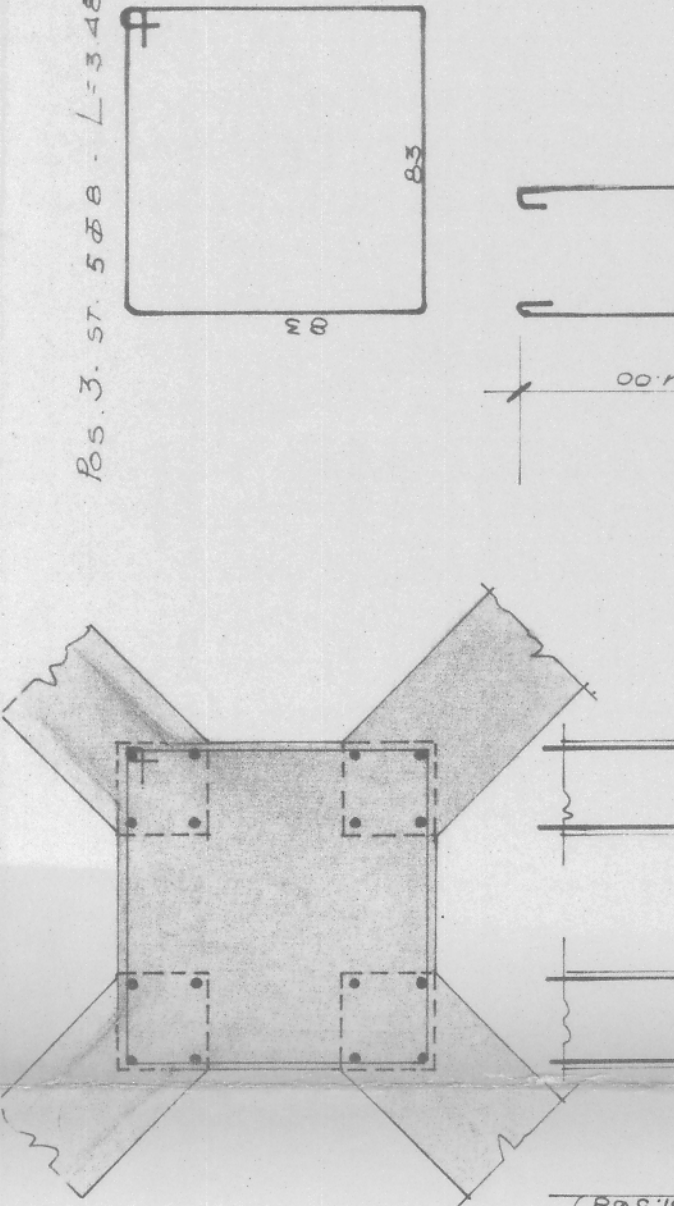
PILASTRI 209-221



PILASTRI 212-206



PILASTRO 215



NB. PER L'ESATTO POSIZIONAMENTO DEI PLUVIALI E L'ORIENTAMENTO DELLE GRONDAIE, È INDISPENSABILE CONSULTARE IL DIS. 239 DELL'ARCH. DAVANZO

B
 ufficio tecnico impresa ing. pio guaraldo
 strada castellana
 parte - 10 - (tel. 93115)
251
 SERVIZI GENERALI - ARCHITETTURA DEI PILASTRI N°214-220
 219-209-221-212-206-215
 PROGETTO DEL FORO BOARIO DI MADONIA
 ing. Dell. Ing. ALDO RAMPOLLO
 tel. 271/19217
 data 31/08/86