

**appalto concorso**  
per la costruzione del nuovo macello  
comunale in località chiesanuova

IMPRESA EUGENIO GRASSETTO S.A.S.  
Zona Industriale  
Via S. C. V. 10000  
37010

DOTTA ANTONIO GIULIANO LEGGIANI  
Architetto  
Via S. C. V. 10000  
37010

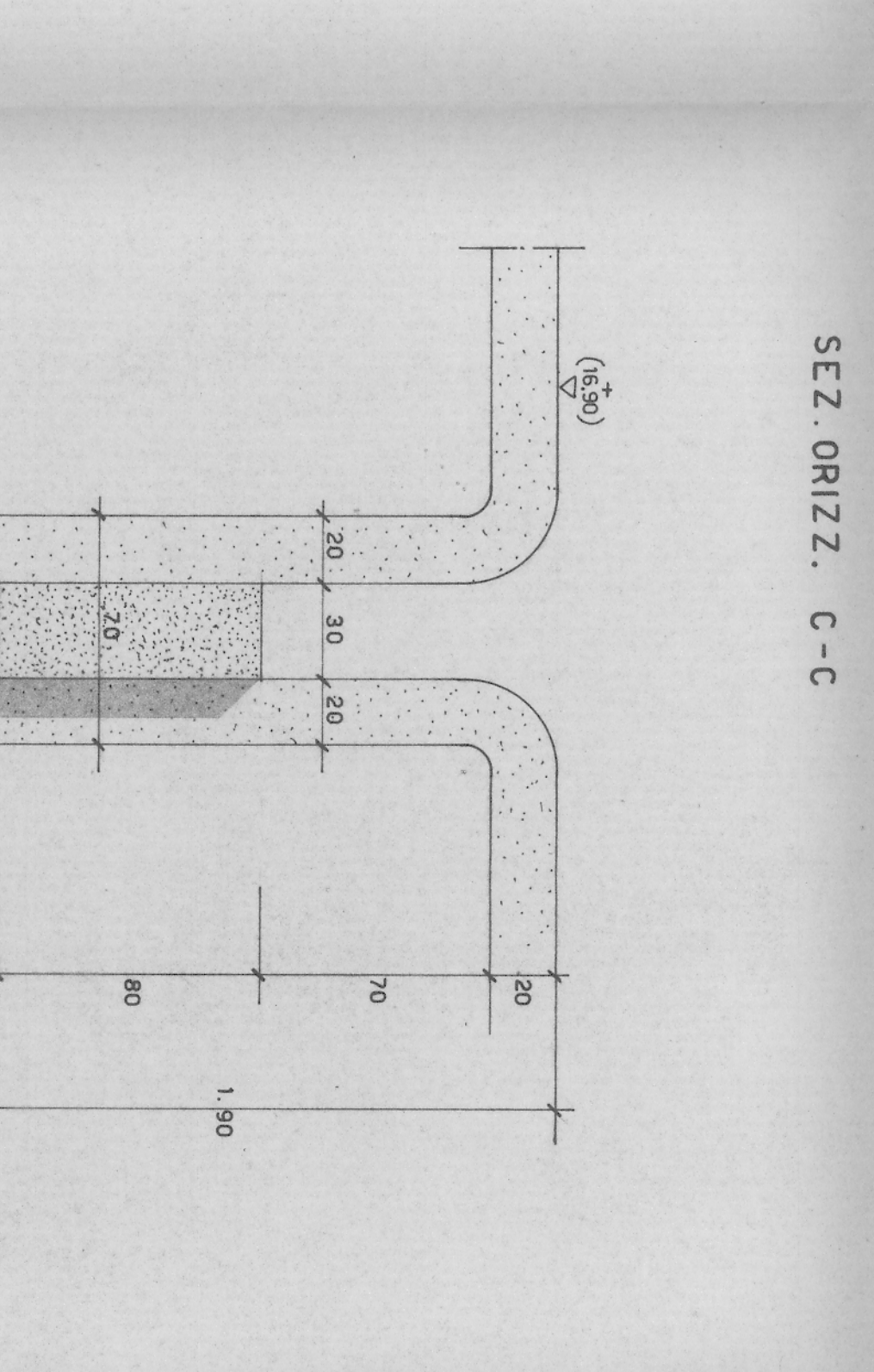
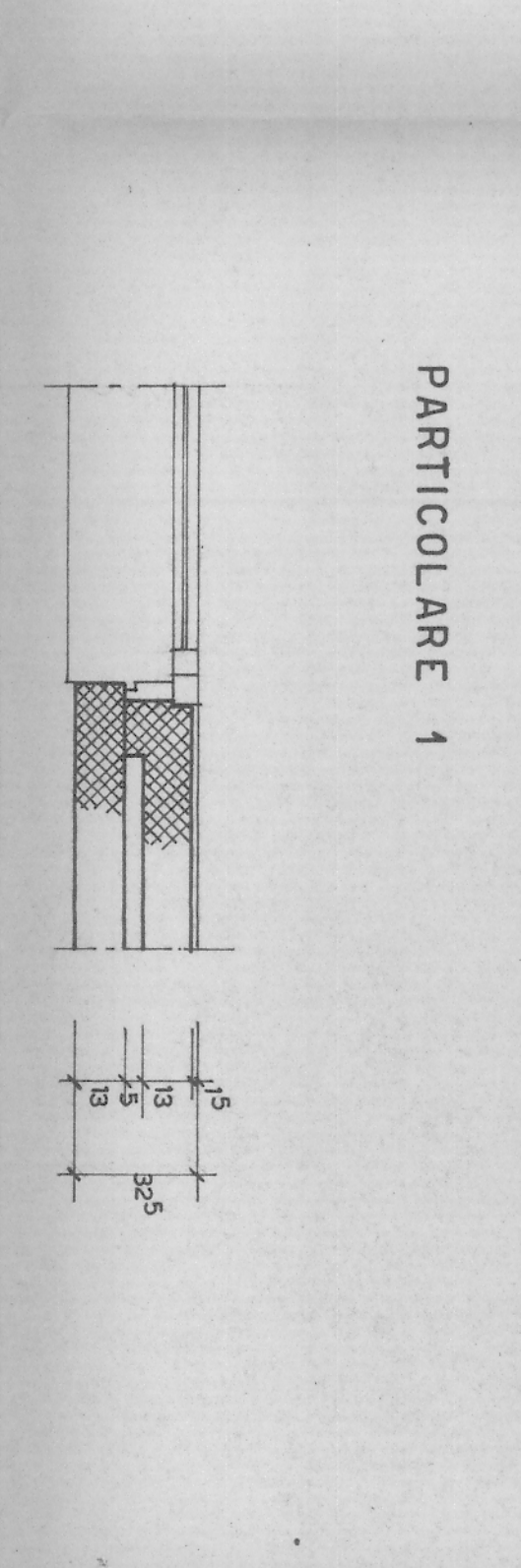
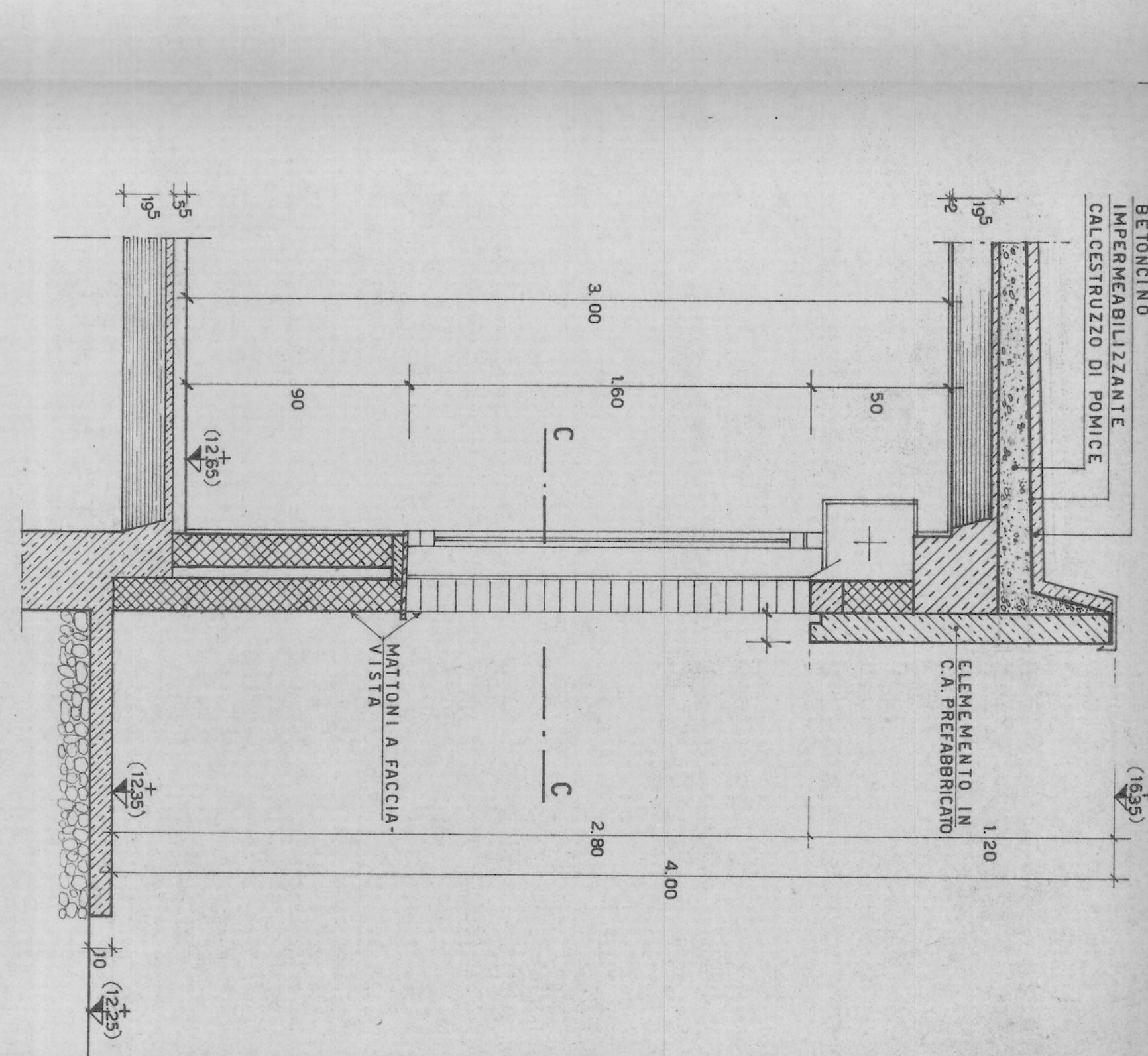
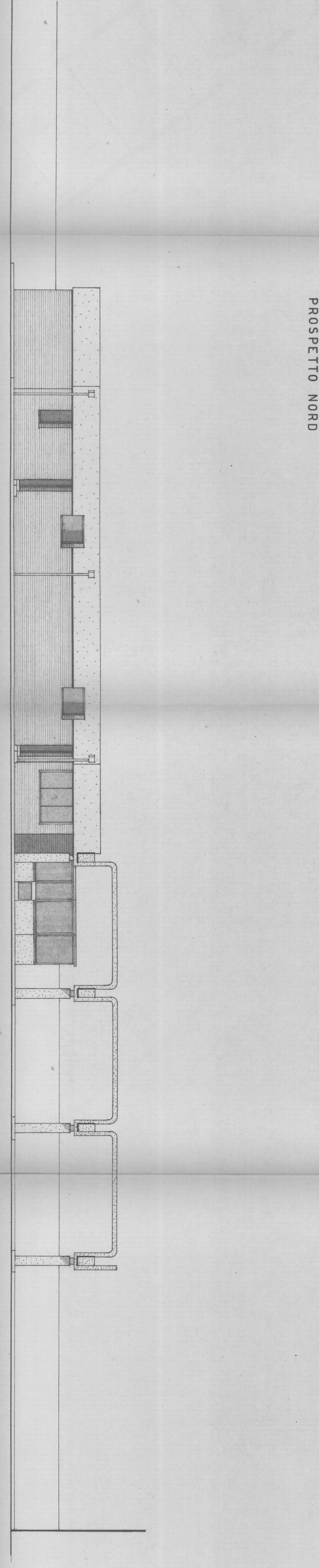
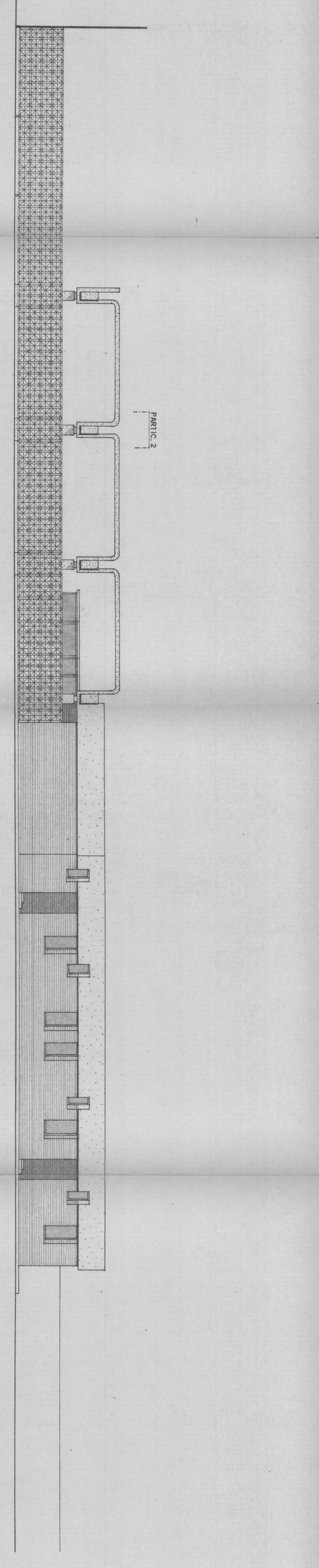
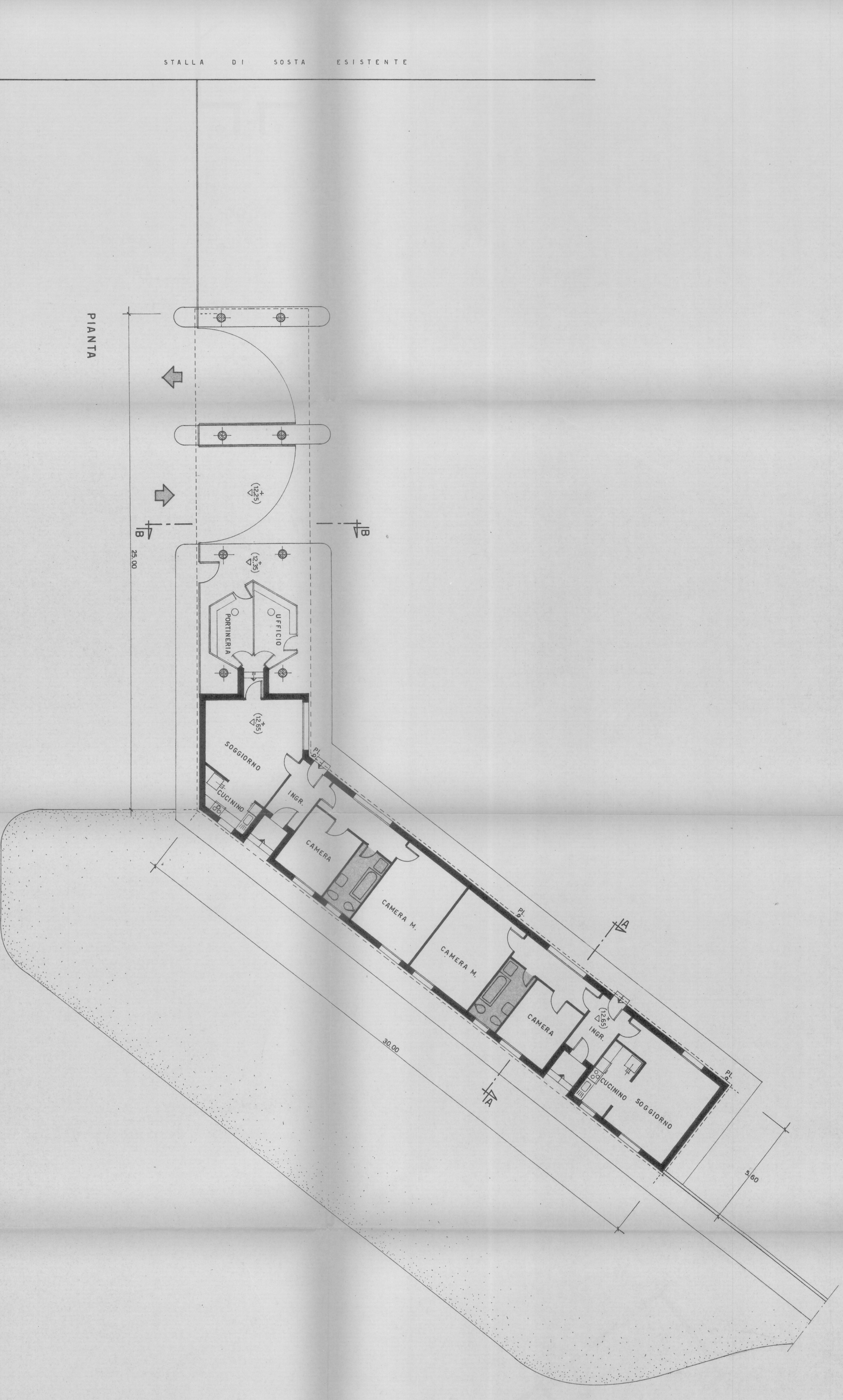
IMPRESA LUIGINO GIANNINI S.A.S.  
Via S. C. V. 10000  
37010

ta.v. 23-A  
PORTINERIA CON ALLOGGI

RAPP. 1:100

progetto e coordinamento: ufficio tecnico impresa egrassetto - padova  
consulente tecnico: dott. otto rasnack - bochum germania o.c.

impresa eugenio grassetto s.a.s.  
di iovone e giancarlo grassetto - filiale di padova



STAGIONE  
IMPERMEABILIZZANTE  
CALCESTRUZZO DI FONDELE  
ELEMENTI IN C.M. ARMABITICO