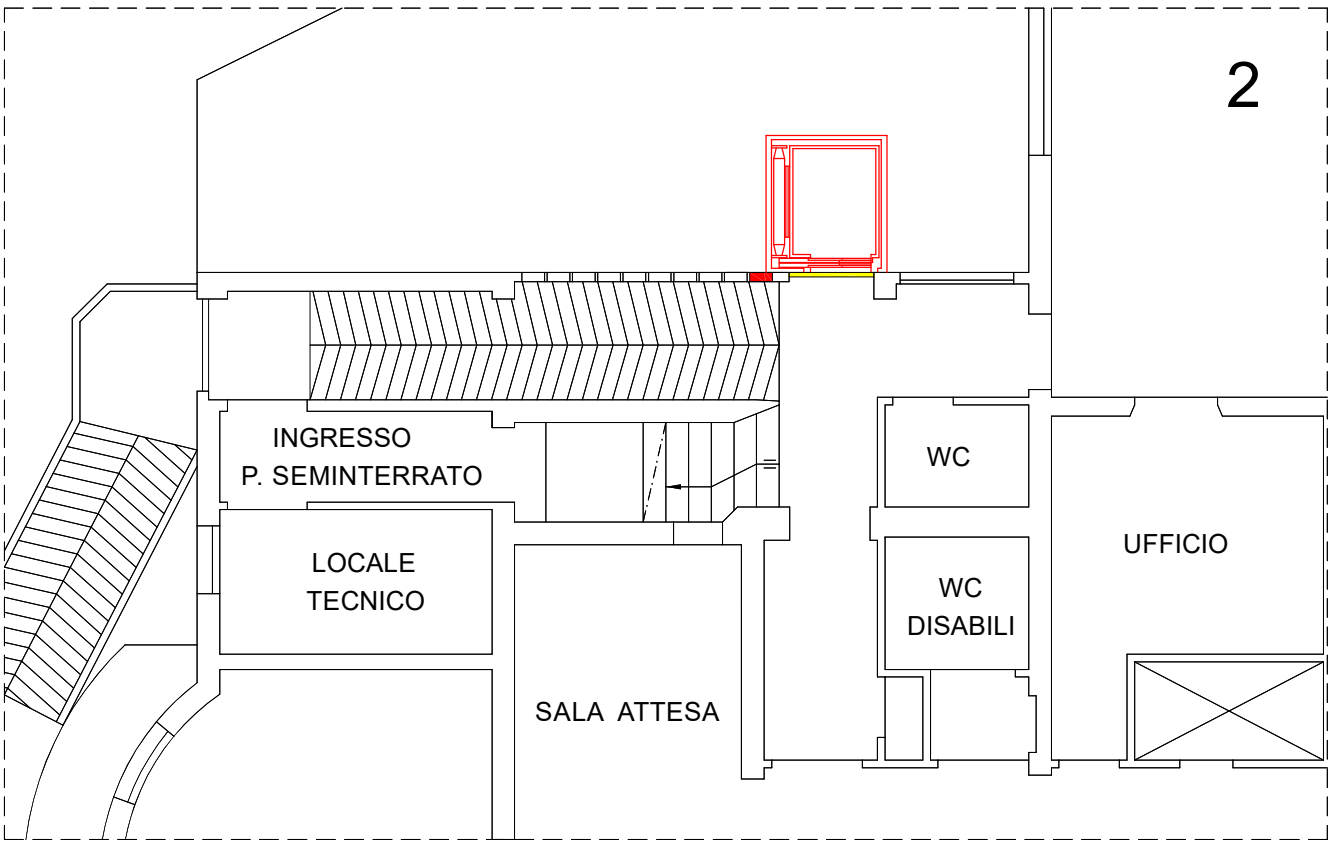
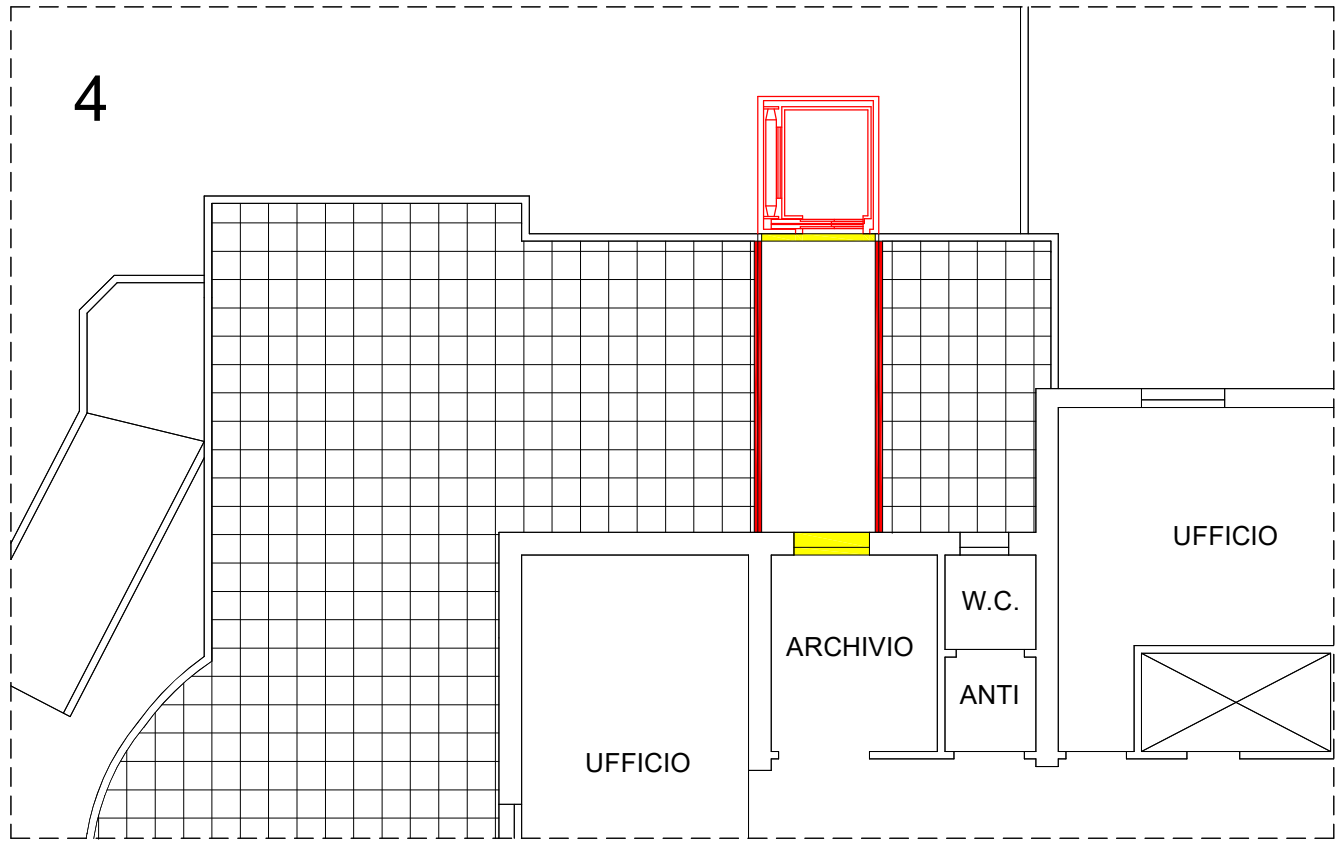


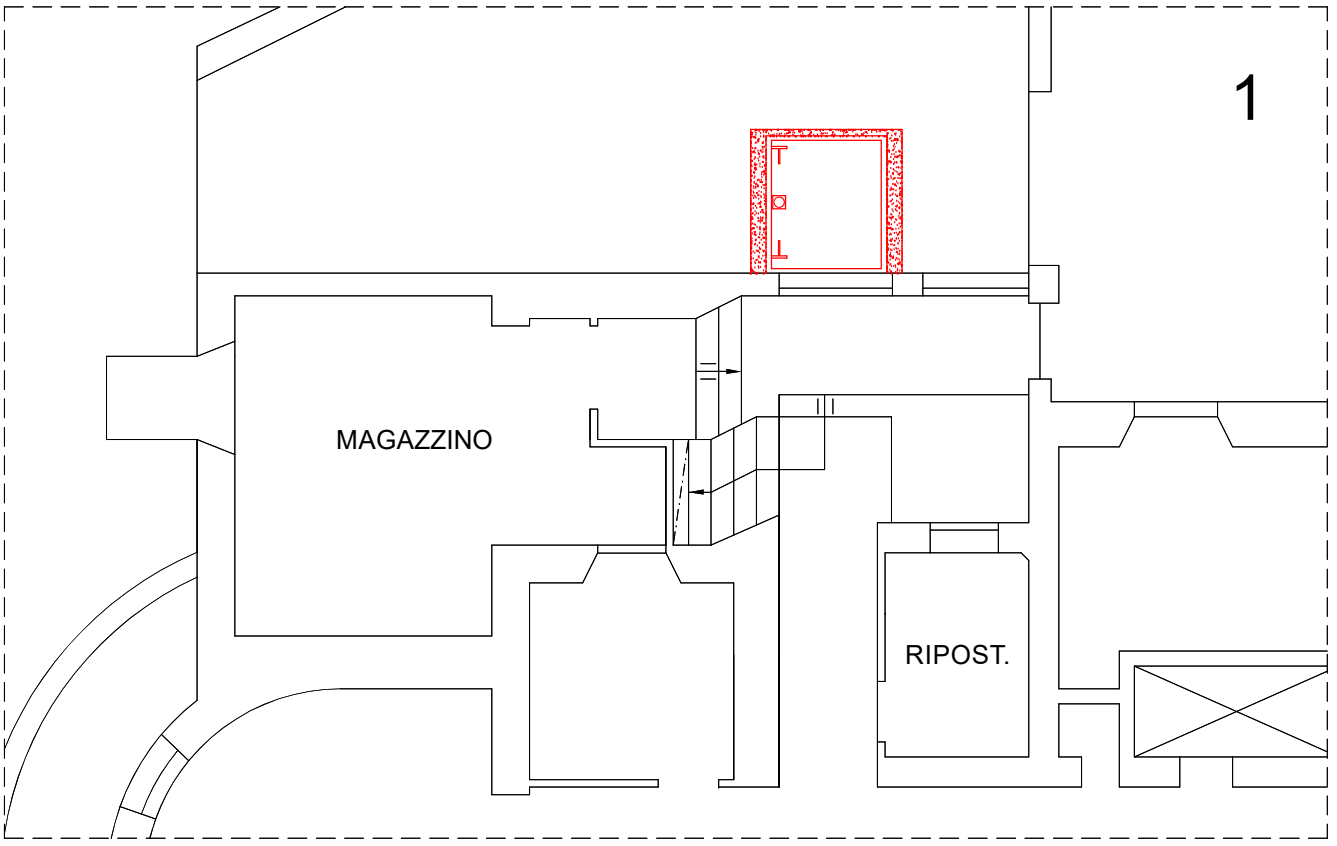
scala 1:100



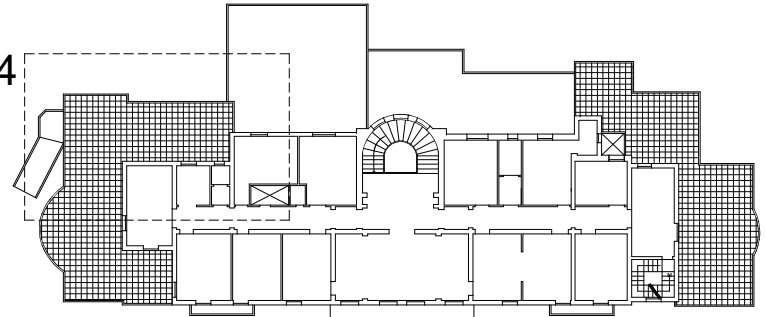
scala 1:100



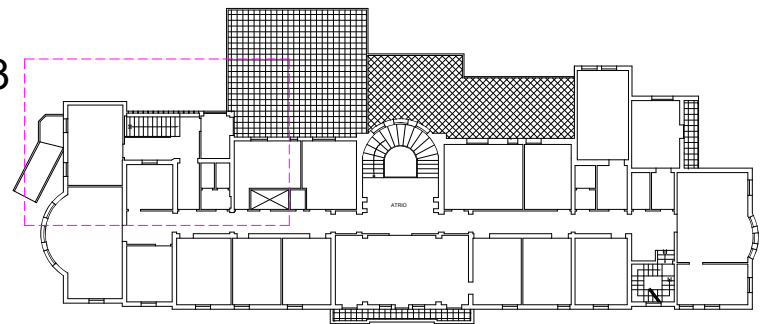
scala 1:100



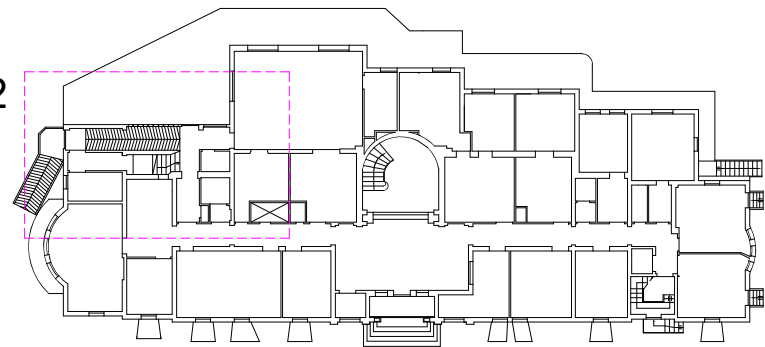
scala 1:100



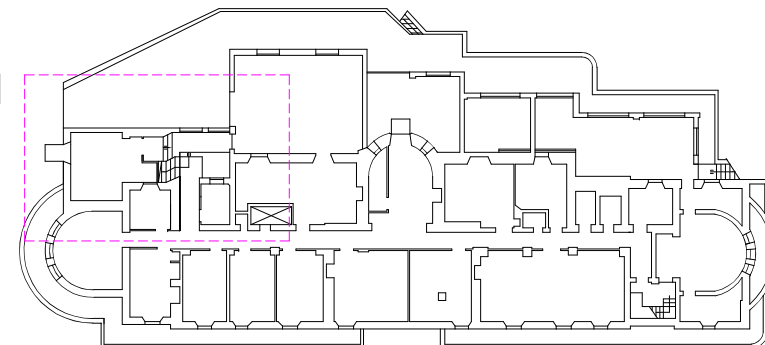
PIANO SECONDO



PIANO PRIMO



PIANO TERRA/RIALZATO



PIANO SEMINTERRATO

scala 1:500

COMUNE di PADOVA

Settore Lavori Pubblici

via Nicolò Tommaseo 60 - tel. 049.820.43.02 - ediliziapubblica@comune.padova.it



VILLA MARTA

Installazione ascensore per disabili

PROGETTO ESECUTIVO
IMPORTO COMPLESSIVO: € 140.000,00



N° Progetto
LLPP EDP 2017/08

Nome file
VM-compara1-E.dwg

Data
giugno 2018

CUP
H91E17000050004

CIG

Elaborato
ARCH9

TAVOLE ARCHITETTONICHE
COMPARATIVA - PIANTE

Progettisti

Arch. Diego Giacon
Ing. Giuseppe Olivieri
Geom. Sergio Bolgan

R.U.P.

Arch. Diego Giacon

Capo Settore